

Halfmoon Melee Tournament Field Directions

Halfmoon Town Park (All Teams)
Harris Park (8u)
Garrett Field (12u)

Jenkins Field (14U)
Clifton Commons (8U)

DIRECTIONS TO HALFMOON TOWN PARK:

147 Route 236, Halfmoon, NY

[Map Link](#)

Directions from South:

I-87 North to exit 8A for Grooms Road
Turn right onto County Rd 91/Grooms Rd
Cross Route 9
Take the 1st left onto NY-236 N
Halfmoon Town Park is 2.5 miles on Left

Directions from North:

I-87 South to exit 9E for NY-146 E toward Halfmoon
Cross Route 9
Turn right onto NY-236 S
Halfmoon Town Park is on Right



DIRECTIONS TO HARRIS PARK:

Harris Park Waterford, NY

[Map Link](#)

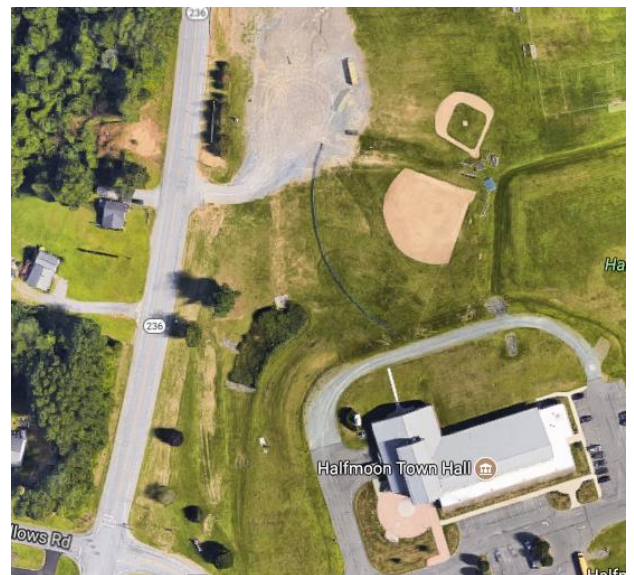
Directions:

Directions from South:

I-87 North to exit 8A for Grooms Road
Turn right onto County Rd 91/Grooms Rd
Cross Route 9
Take the 1st left onto NY-236 N
Harris Park is 2 miles on Right

Directions from North:

I-87 South to exit 9E for NY-146 E toward Halfmoon
Cross Route 9
Turn right onto NY-236 S
Harris Park is on Left



DIRECTIONS TO GARRETT FIELD:

[Map Link](#)

Directions:

From I87 (Northway): Exit 8A - Go east on Grooms Rd for approximately 7 miles to Broad St (Rt 32) - (NOTE: Grooms Rd changes names to Guideboard Rd, then Middletown Rd then 6th St) - Turn right on Broad St (Rt 32) - large stone church on your left (St. Mary's) - bear left over canal bridge and Garrett Field is first left turn.

FROM SOUTH on I787 - Go north until it ends in Cohoes
- Turn right on Rt 32 and follow signs for Waterford
- About 1 mile, just past the cemetery, turn right on Mohawk Ave. - Look for black sign with white lettering
- Garrett Field/Ursula - if you cross the canal bridge you went too far.



DIRECTIONS TO JENKINS PARK:

20 Jenkins Road, Burnt Hills

[Map Link](#)

Directions:

Rt 50 in burnt hills to Lakehill road. take lake hill road to Goode street go 1 mile then left to Jenkins road then 1/2 mile park is on the right



DIRECTIONS TO CLIFTON COMMONS:
Clifton Common Vischers Ferry Road 12065
[Map Link](#)

Directions:

From the North Take the Northway (I-87) south to Exit 9W. Take right at end of ramp on to Route 146-west. Continue straight until 4th traffic light (Landmark: 3rd light will be at entrance to Shenendehowa Central Schools). At 4th traffic light, take left on Vischers Ferry Road. Go about 3/10 of a mile; entrance to Clifton Commons is on left (just past soccer fields). Take left into Clifton Commons and follow road around Ice Arena.

From the South Take the Northway (I-87) north to Exit 9. Take left at end of ramp on to Route 146-west. Continue straight until 4th traffic light (Landmark: 3rd light will be at entrance to Shenendehowa Central Schools). At 4th traffic light, take left on Vischers Ferry Road. Go about 3/10 of a mile; entrance to Clifton Commons is on left (just past soccer fields). Take left into Clifton Commons and follow road around Ice Arena.

